



Impact of Petrol Pricing Select Committee

Chair

Mr Andrew Fraser MP
Member for Mount Coot-tha
Office Tel: 07 3368 3208
Mobile Tel: 0437 116 466

Members

Mr Michael Caltabiano MP
Member for Chatsworth
Mrs Liz Cunningham MP
Member for Gladstone
Mr Simon Finn MP
Member for Yeerongpilly
Mr Michael Horan MP
Member for Toowoomba South
Ms Rachel Nolan MP
Member for Ipswich
Mr Craig Wallace MP
Member for Thuringowa

Inquiries to the Committee Secretariat:

Impact of Petrol Pricing
Select Committee
level 6
Parliamentary Annexe
George Street
BRISBANE QLD 4000

Tel: 1800 504 022
Fax: (07) 3406 7070
Email:
petrol@parliament.qld.gov.au

Internet:
<http://www.parliament.qld.gov.au/petrol>

The Impact of Petrol Pricing Select Committee was appointed by the Queensland Parliament on 25 August 2005 to examine a range of issues regarding petrol pricing in Queensland.

Media Release

Committee to look at housing changes fuelled by spiralling petrol prices

A parliamentary hearing in Ipswich on Monday will examine the impacts of high fuel prices on housing and public transport in outer metropolitan areas.

‘Areas such as the western corridor to Ipswich will see massive population and housing growth in the coming decade’ says committee Chair, Andrew Fraser MP. ‘The jobs to population ratio in Ipswich is currently 36 percent. This means most Ipswich people have to travel to Brisbane and other areas for work. They are catching the train or perhaps driving 400 or 500 kilometres or more per week just to get to work. Around 80,000 cars use the Ipswich motorway each day.’

‘Average daily fuel price rises in Ipswich have closely followed Brisbane prices. Unleaded petrol in Ipswich peaked at 128.1 cents per litre in September, up from 81.2 cents per litre in January, a rise of 58 percent. Diesel prices peaked in October at 125.6 cents per litre, up from 93.4 cents in January, a rise of 34 per cent.’

‘Sustained high fuel prices will forever change housing and travel choices in communities such as Ipswich, Logan and Caboolture on the outskirts of Brisbane. Ensuring that new housing has good access to public transport, shops and services will only grow in importance.’

‘The committee will use the Ipswich hearing to look at how regional planning and transport systems would cope with the expected changes. We will take evidence from planners, transport experts and researchers as well as community groups and local businesses. The hearing will include an open floor session so we expect to hear from private citizens as well.’

The hearing in Ipswich follows hearings in Rockhampton, Mackay and Hervey Bay. A further eight hearings are planned for Brisbane and other parts of the state during November.

The Ipswich public hearing will be held from 9.30-11.30am on Monday 24 October in the Cunningham Room, Ipswich Civic Hall, Cnr Nicholas and Limestone Streets, Ipswich.

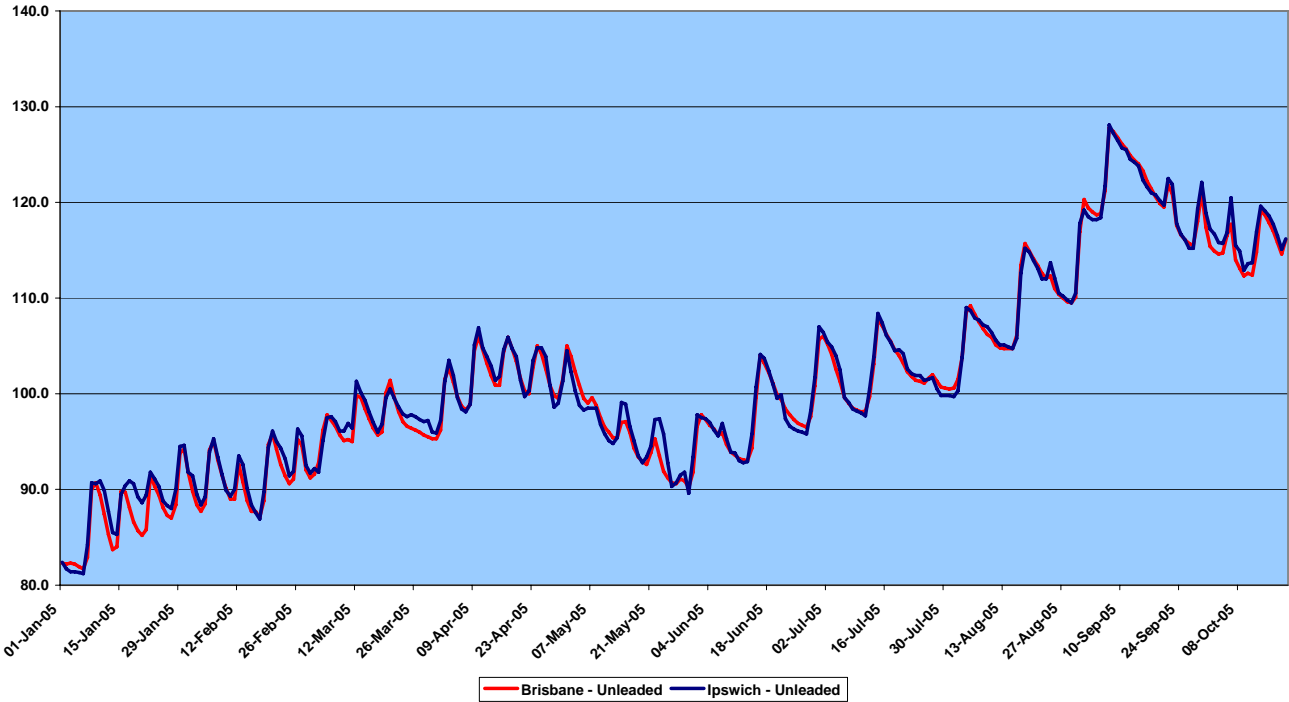
The committee is taking public submissions for their inquiry and will report to Parliament in March 2006.

Andrew Fraser MP is available for interviews. Please call (0437) 116 466.

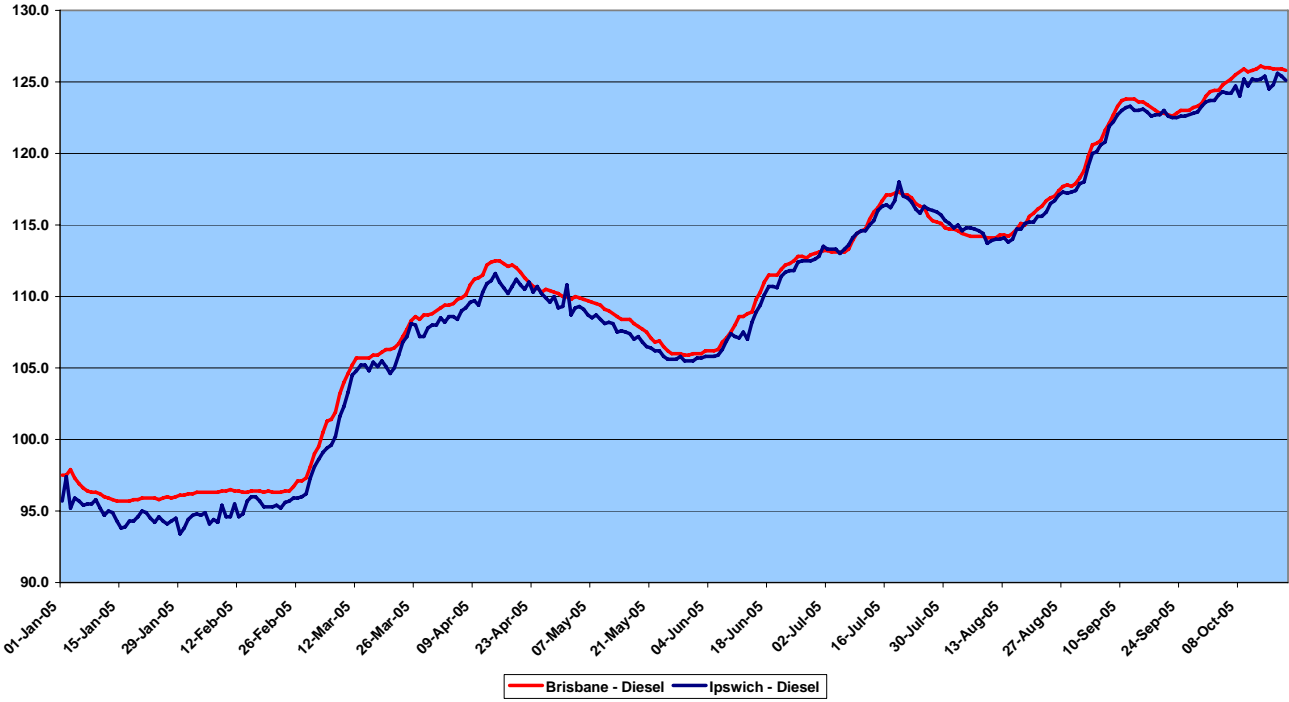
For background information about the inquiry, please call Rob Hansen on 340 67669 or (0403) 792 881.



Brisbane, Ipswich
Unleaded Daily Pricing
1st January 2005 to 10th October 2005



Brisbane, Ipswich
Diesel Daily Pricing
1st January 2005 to 10th October 2005



IMPACT OF PETROL PRICING SELECT COMMITTEE

During their inquiry, the Impact of Petrol Pricing Select Committee will examine and report on:

- the extent to which current petrol prices increase the competitiveness of alternative fuels such as E-10;
- the economic and financial consequences of current fuel prices, with a particular emphasis on regional Queensland and outer metropolitan areas;
- practical ways that consumers can reduce their petrol bills;
- whether existing information on the fuel efficiency of different makes of motor vehicles is sufficient;
- the extent to which recent fuel increases could be moderated through enhanced domestic competition;
- how the Australian Competition and Consumer Commission's powers could be strengthened to deliver enhanced competition;
- whether Queensland receives its fair share of road funding;
- the capacity and benefits of the Federal Government reducing fuel excise to ameliorate the impact of high fuel prices on families and business;
- whether Queensland motorists are receiving the full benefit of the 8.354 cents per litre subsidy; and
- the efficiency of administration for the bulk end users scheme.

FOR FURTHER INFORMATION

Information about the inquiry is available from the web at www.parliament.qld.gov.au/petrol or by calling the committee's secretariat staff on **1800 504 022**.

ENDS