

## **Inquiry - Improving Queensland's Container Refund Scheme**

<b>Submission No:</b>	106
<b>Submitted by:</b>	Battery Stewardship Council
<b>Publication:</b>	Making the name and your submission public
<b>Attachments:</b>	See attachment
<b>Submitter Comments:</b>	

4<sup>th</sup> April 2025

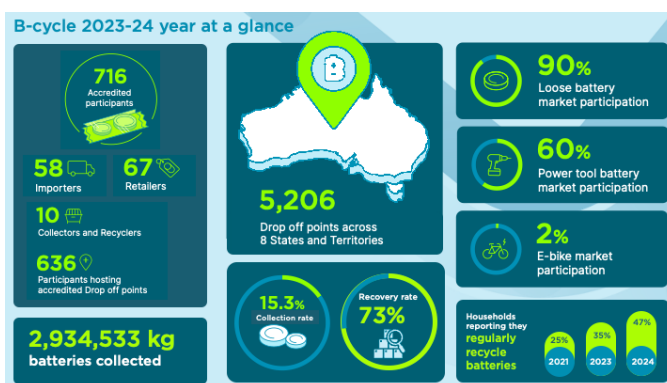
To whom it may concern

## Inquiry into Improving Queensland's Container Refund Scheme

I wish to encourage the Department to support the CRS continued engagement with the Battery Stewardship Council and the accreditation of CRS sites as B-cycle accredited Drop off points. B-cycle is a unique stewardship scheme in that it is designed to leverage a multitude of drop off points including those typically used for other products.

B-cycle has quickly become one of the most accessible stewardship schemes in the Country with over 5,000 free Drop off points in metro, regional and remote areas. Further information on the Scheme can be found in our [Annual Report](#).

There are currently 1,038 B-cycle accredited Drop off Points in QLD which constitutes 20% of B-cycle network. In the past year, B-cycle has collected 183,469,375 individual battery unites or 440,327 kg in QLD alone. This equates to 0.079 kg batteries recycled per capita.



Over the past 12 months the BSC has conducted a [major review](#) of B-cycle to overcome challenges faced by industry and ensure the Scheme has the flexibility to respond to changing economic conditions and address the changed risk profile of batteries. As a young voluntary Scheme, B-cycle has achieved a strong foundation, but has been advocating for regulation to address our core challenge of free riders. Once free riding is regulated, the BSC will be able to access much needed funds to educate the community, improve container infrastructure, but most importantly to cover the cost of transporting and recycling batteries into new products.

BSC considers the CRS to provide an important community service and would like to consolidate on our partnership with CRS to improve accessibility to all appropriate sites, to align messaging and assist in the provision of training and best practice guidance to support safe and responsible recycling of batteries.

Yours sincerely,

Libby Chaplin  
Chief Executive Officer  
BATTERY STEWARDSHIP COUNCIL

REF: BSC Submission to CRS Inquiry 20250404.docx