

Schools Planning Commission

tabled 11.09
23/7/13
BSP

Schools Infrastructure Demand Maps

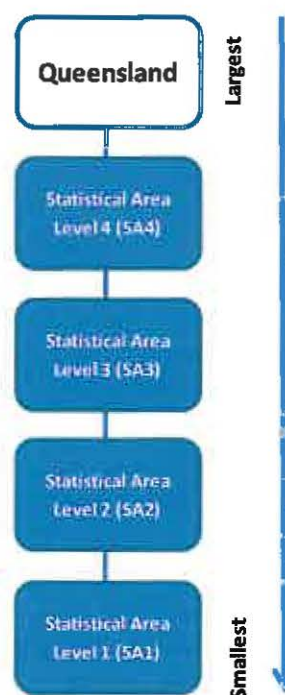
The suite of Schools Infrastructure Demand Maps display the average annual growth of projected primary and secondary school age persons, by Statistical Area 2 for each individual Statistical Area 3 in Queensland, for the time periods 2011-21 and 2021-31.

SA3 Name: Brisbane Inner

SA2s in Brisbane Inner SA3

SA2 Code (as used in map)	SA2 Name
31105	Brisbane City
31106	Fortitude Valley
31107	Highgate Hill
31108	Kangaroo Point
31109	New Farm
31110	South Brisbane
31111	Spring Hill
31112	West End

Australian Statistical Geography Standard (ASGS) hierarchy



Accompanying data for these maps can be found at: www.oesr.qld.gov.au/releases/sidmaps

For more information on the Queensland Schools Planning Commission, see <http://education.qld.gov.au/schools/schools-planning-commission/>

© The State of Queensland 2013

You are free to copy, communicate and adapt the work, as long as you attribute the authors. This document is licensed under a Creative Commons Attribution 3.0 Australia licence. To view a copy of this licence, visit <http://creativecommons.org/licenses/by/3.0/au>
To attribute this work cite Schools Infrastructure Demand Maps, Queensland Government.



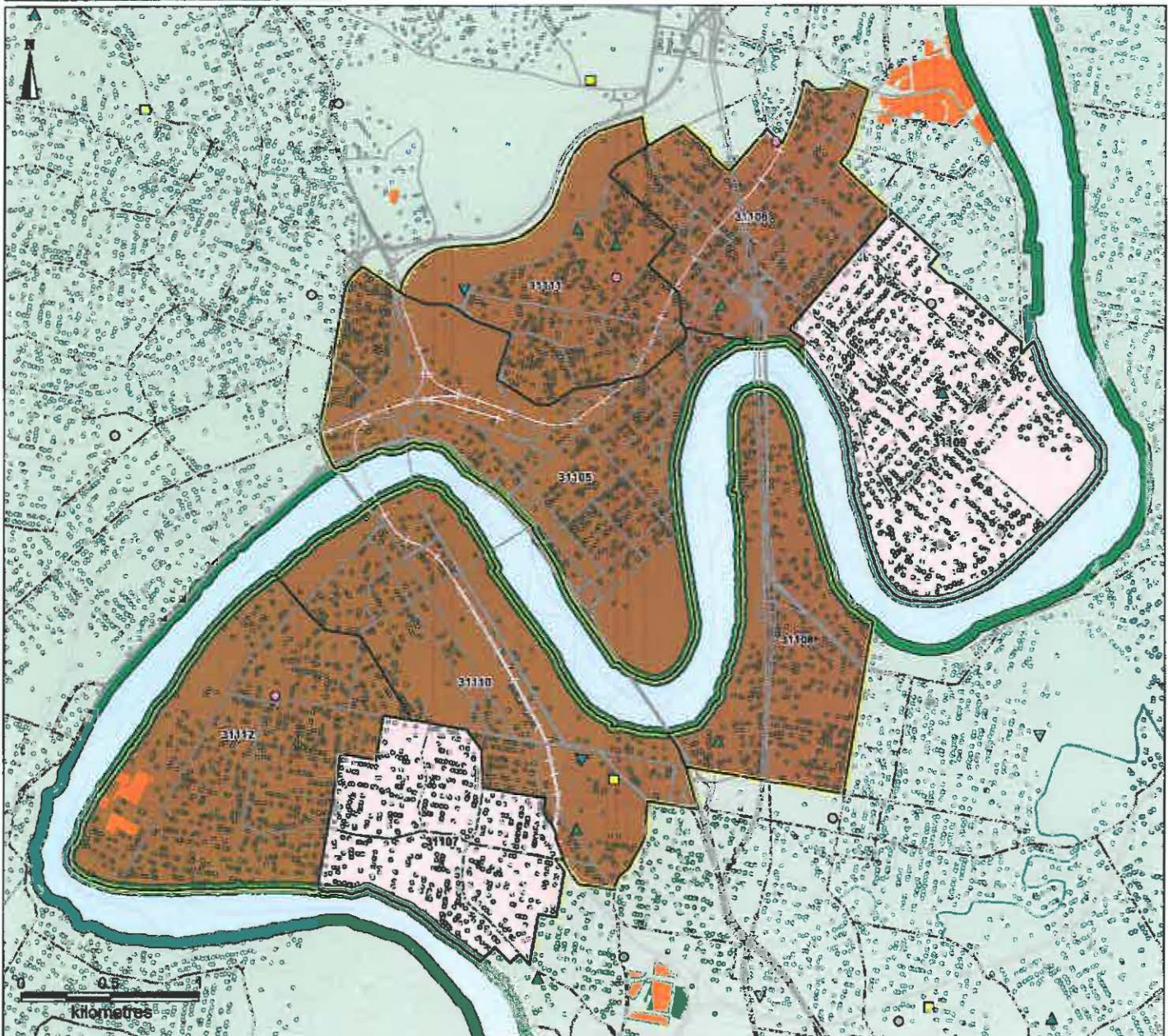
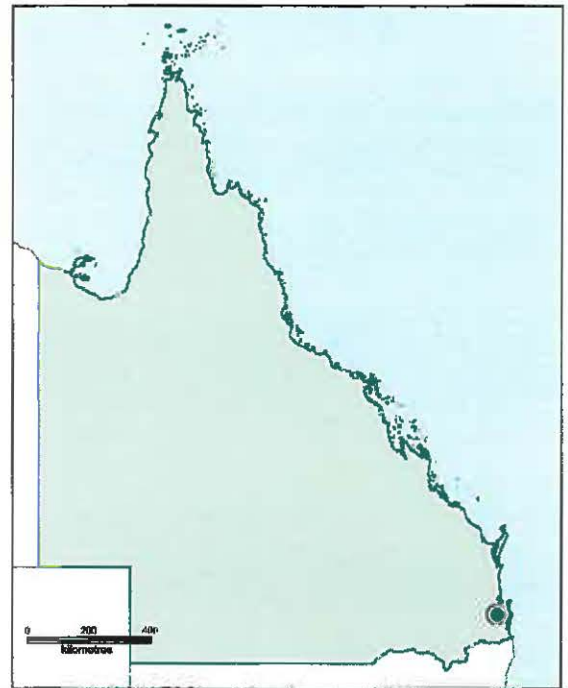
Great state. Great opportunity.



SA3: Brisbane Inner
Level of Schooling: Primary
Projection period: 2011 to 2021

LEGEND

- Government primary schools
 - △ Catholic primary schools
 - ▽ Independent primary schools
 - Special schools
 - Dwelling settlement patterns
 - Broadacre less than 10 years
 - Local government area
 - Roads
 - Railways
 - Arterial roads
 - SA2s in Brisbane Inner SA3
 - Brisbane Inner SA3
 - SA3 boundaries
- Projected Primary School Age Persons***
Annual Average Growth (2011-2021) by SA2
- 2% or more
 - 1% to less than 2%
 - -1% to less than 1%
 - Less than -1%
- *Includes transition of Year 7 from primary to secondary school (see Notes 2 and 3).



Notes:





1. These SA2 level data have been concorded from Statistical Local Area-level projections, and represent the Government Statistician's best estimates of population growth. These data will be updated when fully-modelled SA2 projections are released in late 2013.
2. Care should be taken when interpreting the population growth in school-aged children due to the transition of Year 7 from primary to secondary in 2015.
3. Primary school age persons are those aged between 5 and 12 (inclusive) in 2011, and those aged between 5 and 11 (inclusive) in 2021 or 2031.

Sources: Australia: Bureau of Statistics, Australian Statistical Geography Standard, 2011, cat. no. 1270.0.55.001; Queensland Government, State Digital Road Network, September 2012; Queensland Treasury and Trade, Queensland Government population projections, 2011 edition (medium series); Education, Training and Employment, Non-State Schools Accreditation Board; Local Government; GNAF Property Data - 27th February 2012



SA3: Brisbane Inner
Level of Schooling: Primary
Projection period: 2021 to 2031

LEGEND

-  Government primary schools
-  Catholic primary schools
-  Independent primary schools
-  Special schools
-  Dwelling settlement patterns

Broadhectare 10 years or more

 Local government area

Railways

Arterial maps

1997, 1998, 1999, 2000, 2001, 2002, 2003, 2004, 2005, 2006, 2007, 2008, 2009, 2010, 2011, 2012, 2013, 2014, 2015, 2016, 2017, 2018, 2019, 2020, 2021, 2022, 2023, 2024, 2025, 2026, 2027, 2028, 2029, 2030, 2031, 2032, 2033, 2034, 2035, 2036, 2037, 2038, 2039, 2040, 2041, 2042, 2043, 2044, 2045, 2046, 2047, 2048, 2049, 2050, 2051, 2052, 2053, 2054, 2055, 2056, 2057, 2058, 2059, 2060, 2061, 2062, 2063, 2064, 2065, 2066, 2067, 2068, 2069, 2070, 2071, 2072, 2073, 2074, 2075, 2076, 2077, 2078, 2079, 2080, 2081, 2082, 2083, 2084, 2085, 2086, 2087, 2088, 2089, 2090, 2091, 2092, 2093, 2094, 2095, 2096, 2097, 2098, 2099, 2100, 2101, 2102, 2103, 2104, 2105, 2106, 2107, 2108, 2109, 2110, 2111, 2112, 2113, 2114, 2115, 2116, 2117, 2118, 2119, 2120, 2121, 2122, 2123, 2124, 2125, 2126, 2127, 2128, 2129, 2130, 2131, 2132, 2133, 2134, 2135, 2136, 2137, 2138, 2139, 2140, 2141, 2142, 2143, 2144, 2145, 2146, 2147, 2148, 2149, 2150, 2151, 2152, 2153, 2154, 2155, 2156, 2157, 2158, 2159, 2160, 2161, 2162, 2163, 2164, 2165, 2166, 2167, 2168, 2169, 2170, 2171, 2172, 2173, 2174, 2175, 2176, 2177, 2178, 2179, 2180, 2181, 2182, 2183, 2184, 2185, 2186, 2187, 2188, 2189, 2190, 2191, 2192, 2193, 2194, 2195, 2196, 2197, 2198, 2199, 2200, 2201, 2202, 2203, 2204, 2205, 2206, 2207, 2208, 2209, 2210, 2211, 2212, 2213, 2214, 2215, 2216, 2217, 2218, 2219, 2220, 2221, 2222, 2223, 2224, 2225, 2226, 2227, 2228, 2229, 2230, 2231, 2232, 2233, 2234, 2235, 2236, 2237, 2238, 2239, 2240, 2241, 2242, 2243, 2244, 2245, 2246, 2247, 2248, 2249, 2250, 2251, 2252, 2253, 2254, 2255, 2256, 2257, 2258, 2259, 2260, 2261, 2262, 2263, 2264, 2265, 2266, 2267, 2268, 2269, 2270, 2271, 2272, 2273, 2274, 2275, 2276, 2277, 2278, 2279, 2280, 2281, 2282, 2283, 2284, 2285, 2286, 2287, 2288, 2289, 2290, 2291, 2292, 2293, 2294, 2295, 2296, 2297, 2298, 2299, 2300, 2301, 2302, 2303, 2304, 2305, 2306, 2307, 2308, 2309, 2310, 2311, 2312, 2313, 2314, 2315, 2316, 2317, 2318, 2319, 2320, 2321, 2322, 2323, 2324, 2325, 2326, 2327, 2328, 2329, 2330, 2331, 2332, 2333, 2334, 2335, 2336, 2337, 2338, 2339, 2340, 2341, 2342, 2343, 2344, 2345, 2346, 2347, 2348, 2349, 2350, 2351, 2352, 2353, 2354, 2355, 2356, 2357, 2358, 2359, 2360, 2361, 2362, 2363, 2364, 2365, 2366, 2367, 2368, 2369, 2370, 2371, 2372, 2373, 2374, 2375, 2376, 2377, 2378, 2379, 2380, 2381, 2382, 2383, 2384, 2385, 2386, 2387, 2388, 2389, 2390, 2391, 2392, 2393, 2394, 2395, 2396, 2397, 2398, 2399, 2400, 2401, 2402, 2403, 2404, 2405, 2406, 2407, 2408, 2409, 2410, 2411, 2412, 2413, 2414, 2415, 2416, 2417, 2418, 2419, 2420, 2421, 2422, 2423, 2424, 2425, 2426, 2427, 2428, 2429, 2430, 2431, 2432, 2433, 2434, 2435, 2436, 2437, 2438, 2439, 2440, 2441, 2442, 2443, 2444, 2445, 2446, 2447, 2448, 2449, 2450, 2451, 2452, 2453, 2454, 2455, 2456, 2457, 2458, 2459, 2460, 2461, 2462, 2463, 2464, 2465, 2466, 2467, 2468, 2469, 2470, 2471, 2472, 2473, 2474, 2475, 2476, 2477, 2478, 2479, 2480, 2481, 2482, 2483, 2484, 2485, 2486, 2487, 2488, 2489, 2490, 2491, 2492, 2493, 2494, 2495, 2496, 2497, 2498, 2499, 2500, 2501, 2502, 2503, 2504, 2505, 2506, 2507, 2508, 2509, 2510, 2511, 2512, 2513, 2514, 2515, 2516, 2517, 2518, 2519, 2520, 2521, 2522, 2523, 2524, 2525, 2526, 2527, 2528, 2529, 2530, 2531, 2532, 2533, 2534, 2535, 2536, 2537, 2538, 2539, 2540, 2541, 2542, 2543, 2544, 2545, 2546, 2547, 2548, 2549, 2550, 2551, 2552, 2553, 2554, 2555, 2556, 2557, 2558, 2559, 2560, 2561, 2562, 2563, 2564, 2565, 2566, 2567, 2568, 2569, 2570, 2571, 2572, 2573, 2574, 2575, 2576, 2577, 2578, 2579, 2580, 2581, 2582, 2583, 2584, 2585, 2586, 2587, 2588, 2589, 2590, 2591, 2592, 2593, 2594, 2595, 2596, 2597, 2598, 2599, 2600, 2601, 2602, 2603, 2604, 2605, 2606, 2607, 2608, 2609, 2610, 2611, 2612, 2613, 2614, 2615, 2616, 2617, 2618, 2619, 2620, 2621, 2622, 2623, 2624, 2625, 2626, 2627, 2628, 2629, 2630, 2631, 2632, 2633, 2634, 2635, 2636, 2637, 2638, 2639, 2640, 2641, 2642, 2643, 2644, 2645, 2646, 2647, 2648, 2649, 2650, 2651, 2652, 2653, 2654, 2655, 2656, 2657, 2658, 2659, 2660, 2661, 2662, 2663, 2664, 2665, 2666, 2667, 2668, 2669, 2670, 2671, 2672, 2673, 2674, 2675, 2676, 2677, 2678, 26

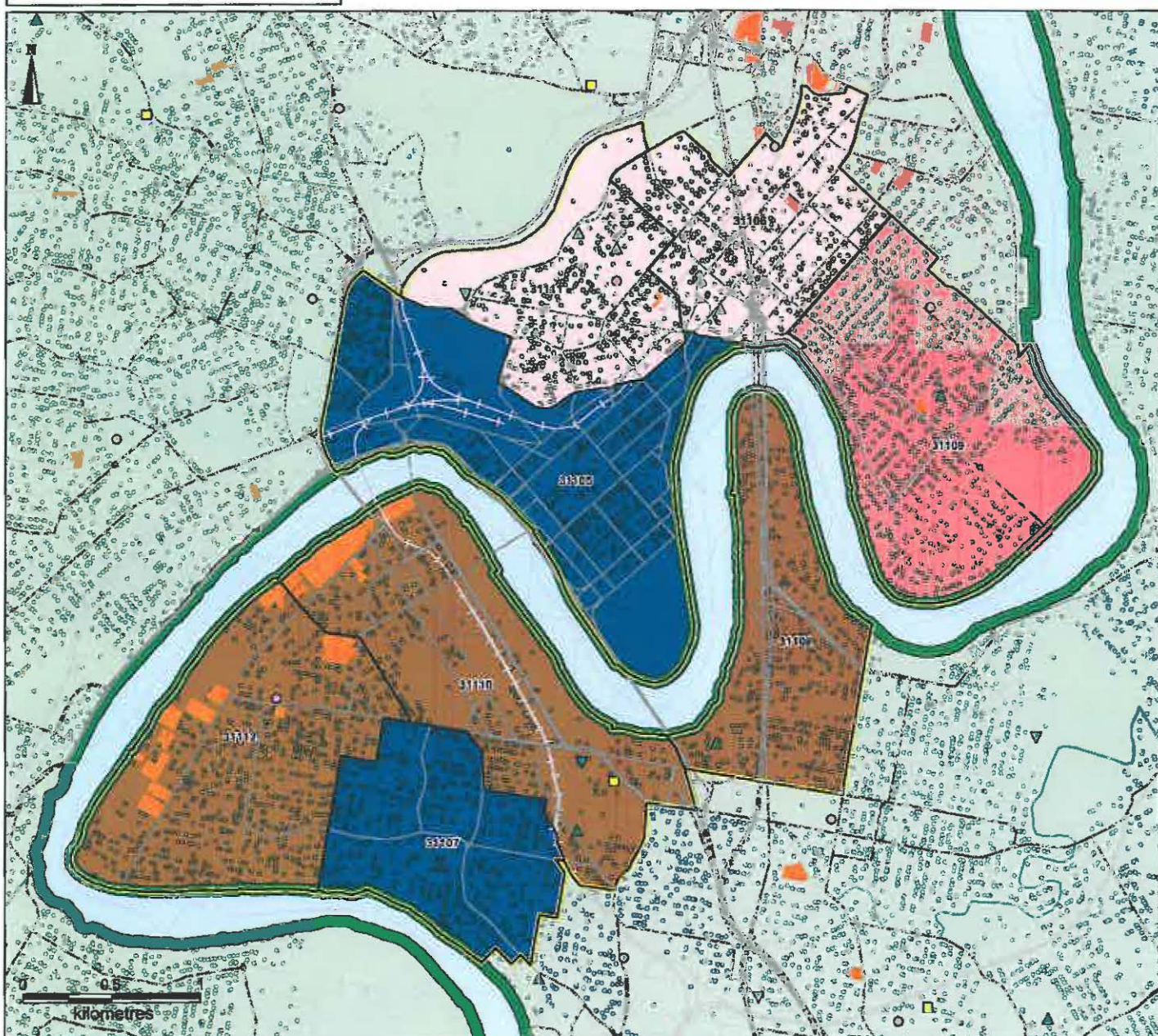
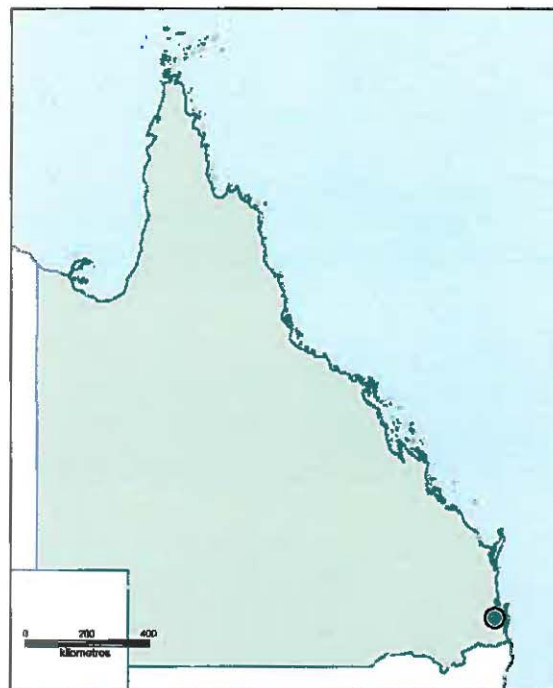
SA2s in Brisbane Inner SA3

Brisbane Inner SA3

SA3 boundaries

**Projected Primary School Age Persons
Annual Average Growth (2021-2031) by SA2**

- 2% or more
- 1% to less than 2%
- -1% to less than 1%
- Less than -1%



NOTE 3.

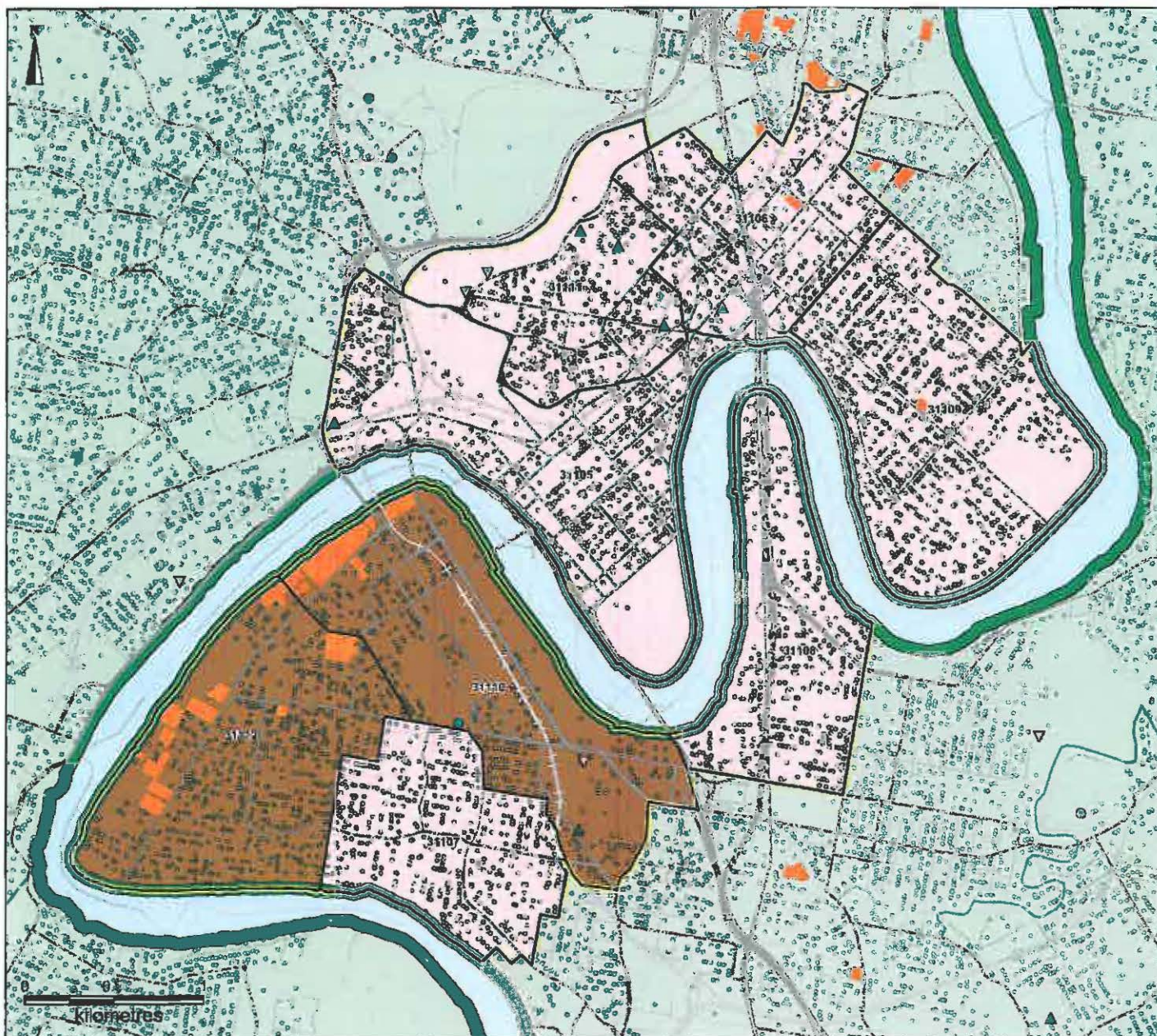
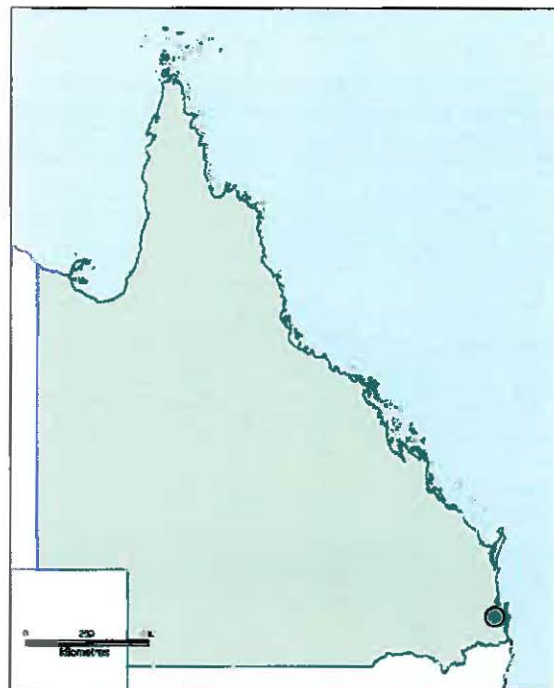
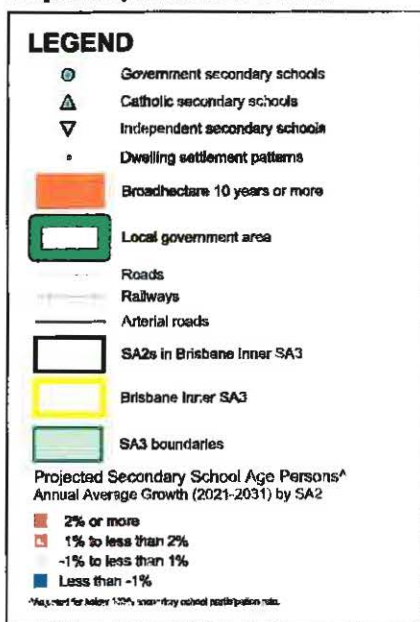
1. These SA2 level data have been concorded from Statistical Local Area-level projections, and represent the Government Statistician's best estimates of population growth. These data will be updated when fully-modelled SA2 projections are released in late 2013.

2. Primary school age persons are those aged between 5 and 12 (inclusive) in 2011, and those aged between 5 and 11 (inclusive) in 2021 or 2031.

Source: Australian Bureau of Statistics, Australian Statistical Geography Standard, 2011, cat. no. 1270.0.35.001; Queensland Government, State Digital Road Network, September 2012; Queensland Treasury and Trade, Queensland Government population projections, 2011 edition (medium series); Education, Training and Employment: Non-State Schools Accreditation Board; Local Government; GNAF Property Data - 27th February 2012



SA3: Brisbane Inner
Level of Schooling: Secondary
Projection period: 2021 to 2031



Notes:

1. These SA2 level data have been concorded from Statistical Local Area-level projections, and represent the Government Statistician's best estimates of population growth. These data will be updated when fully-modelled SA2 projections are released in late 2015.
2. Secondary school age persons are those aged between 13 and 17 (inclusive) in 2011, and those aged between 12 and 17 (inclusive) in 2021 or 2031.

Source: Australian Bureau of Statistics, Australian Statistical Geography Standard, 2011, cat. no. 1270.0.55.001; Queensland Government, State Digital Road Network, September 2012; Queensland Treasury and Trade, Queensland Government population projections, 2011 edition (medium series); Education, Training and Employment Non-State Schools Accreditation Board; Local Government; GNAF Property Data - 27th February 2012



SA3: Brisbane Inner
Level of Schooling: Secondary
Projection period: 2011 to 2021

LEGEND

- Government secondary schools
- ▲ Catholic secondary schools
- ▼ Independent secondary schools
- Dwelling settlement patterns

Orange square: Broadacre less than 10 years

Green outline: Local government area

Black line: Roads
 Grey line: Railways
 Thin black line: Arterial roads

Black outline: SA2s in Brisbane Inner SA3

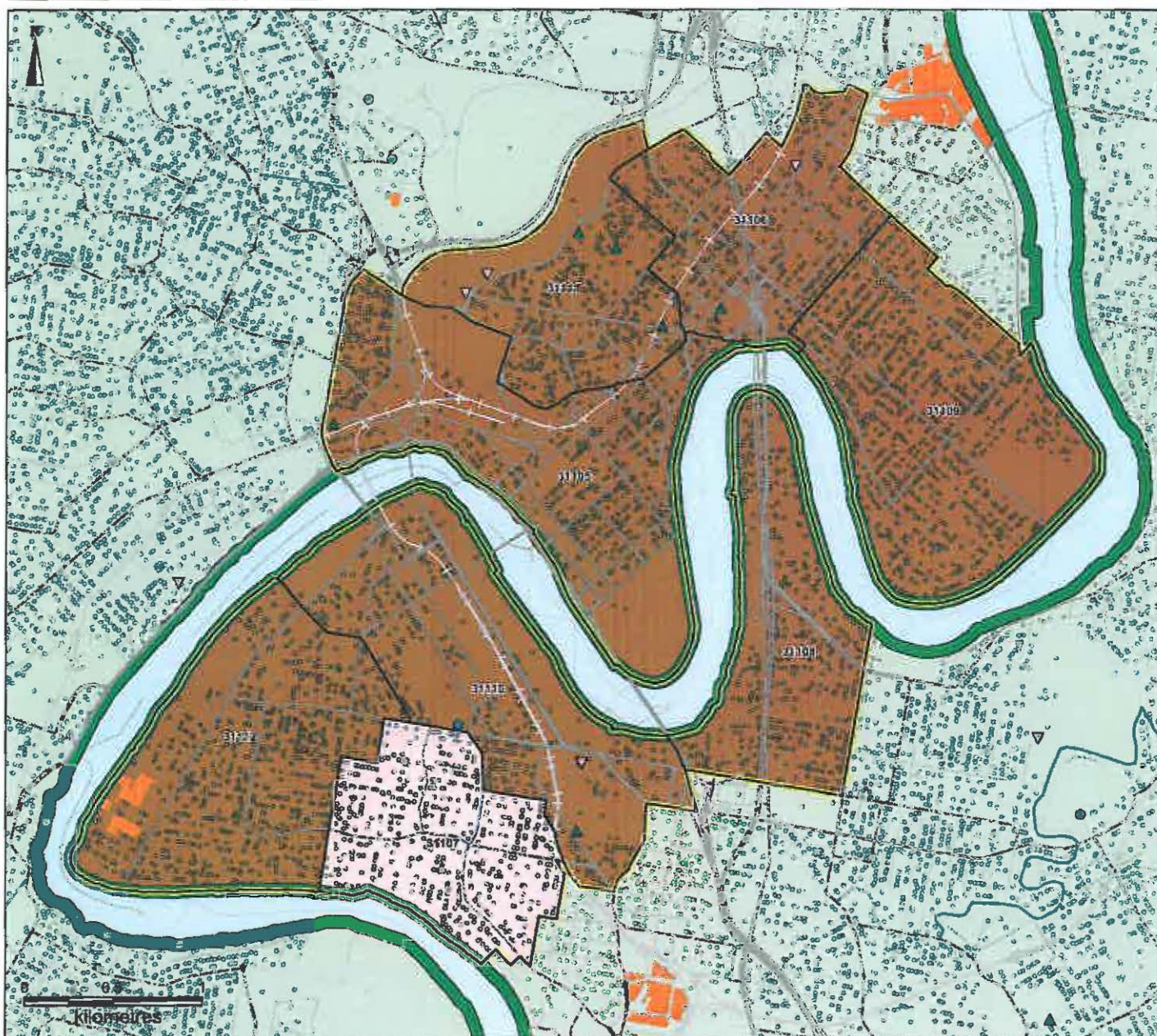
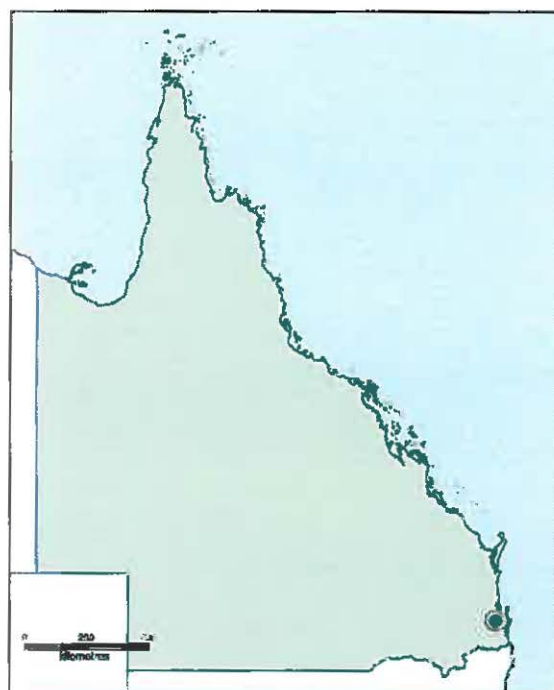
Yellow outline: Brisbane Inner SA3

Green outline: SA3 boundaries

Projected Secondary School Age Persons**
 Annual Average Growth (2011-2021) by SA2

- Dark red square: 2% or more
- Red square: 1% to less than 2%
- Light red square: -1% to less than 1%
- Blue square: Less than -1%

**No school for below 100% average school participation rate.
 *Includes transition of Year 7 from primary to secondary school (see Notes 2 and 3).



Notes:

1. These SA2 level data have been concorded from Statistical Local Area-level projections, and represent the Government Statistician's best estimates of population growth. These data will be updated when fully-modelled SA2 projections are released in late 2015.
 2. Care should be taken when interpreting the population growth in school-aged children due to the transition of Year 7 from primary to secondary in 2015.
 3. Secondary school age persons are those aged between 13 and 17 (inclusive) in 2011, and those aged between 12 and 17 (inclusive) in 2021 or 2031.
- Sources: Australian Bureau of Statistics, Australian Statistical Geography Standard, 2011, cat. no. 1270.0.55.001; Queensland Government, State Digital Road Network, September 2012; Queensland Treasury and Trade, Queensland Government population projections, 2011 edition (medium series); Education, Training and Employment, Non-State Schools Accreditation Board; Local Government; GNAF Property Data - 27th February 2012

