

Tabbed 11.25 am  
B22

# Schools Infrastructure Demand Maps

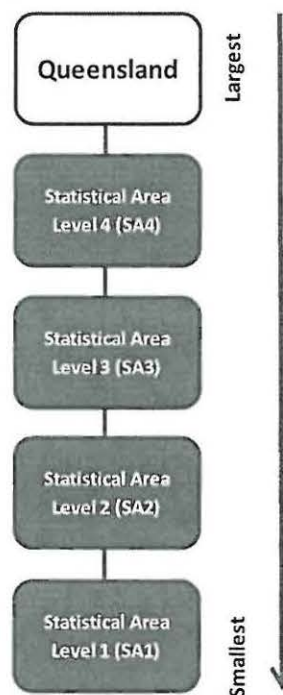
The suite of Schools Infrastructure Demand Maps display the average annual growth of projected primary and secondary school age persons, by Statistical Area 2 for each individual Statistical Area 3 in Queensland, for the time periods 2011-21 and 2021-31.

SA3 Name: Toowoomba

## SA2s in Toowoomba SA3

SA2 Code (as used in map)	SA2 Name
31445	Cambooya - Wyreema
31446	Darling Heights
31447	Drayton - Harristown
31448	Gatton
31449	Gowrie (Qld)
31450	Highfields
31451	Lockyer Valley - West
31452	Middle Ridge
31453	Newtown (Qld)
31454	North Toowoomba - Harlaxton
31455	Rangeville
31456	Toowoomba - Central
31457	Toowoomba - East
31458	Toowoomba - West
31459	Wilsonton

## Australian Statistical Geography Standard (ASGS) hierarchy



Accompanying data for these maps can be found at: [www.oesr.qld.gov.au/releases/sidmaps](http://www.oesr.qld.gov.au/releases/sidmaps)

For more information on the Queensland Schools Planning Commission, see <http://education.qld.gov.au/schools/schools-planning-commission/>

© The State of Queensland 2013

You are free to copy, communicate and adapt the work, as long as you attribute the authors. This document is licensed under a Creative Commons Attribution 3.0 Australia licence. To view a copy of this licence, visit <http://creativecommons.org/licenses/by/3.0/au>  
To attribute this work cite Schools Infrastructure Demand Maps, Queensland Government.



Great state. Great opportunity.

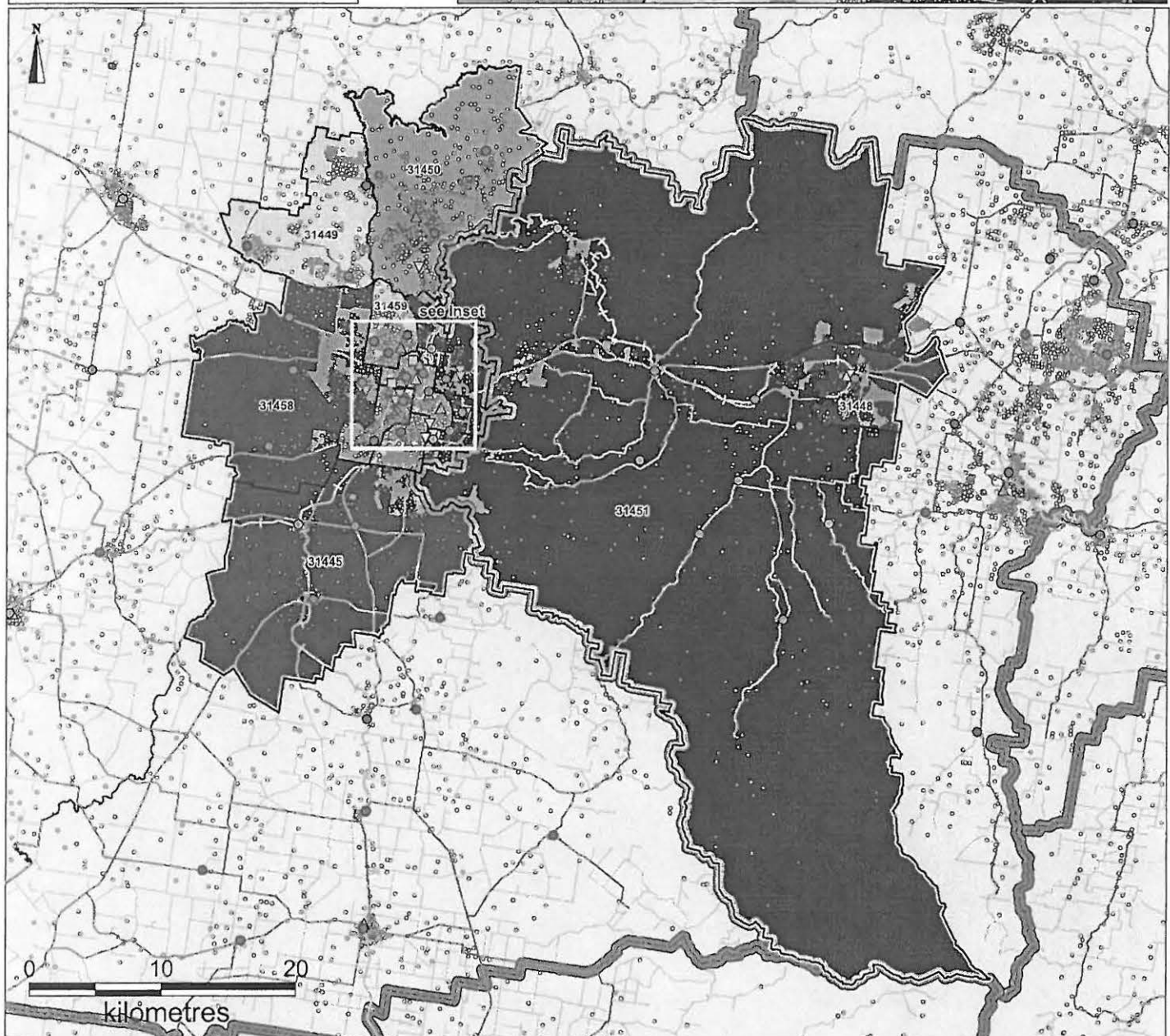


**SA3: Toowoomba**  
**Level of Schooling: Primary**  
**Projection period: 2011 to 2021**

**LEGEND**

- Government primary schools
  - △ Catholic primary schools
  - ▽ Independent primary schools
  - Special schools
  - Dwelling settlement patterns
  - Broadacre less than 10 years
  - ▭ Local government area
  - Roads
  - Railways
  - Arterial roads
  - ▭ SA2s in Toowoomba SA3
  - ▭ Toowoomba SA3
  - ▭ SA3 boundaries
- Projected Primary School Age Persons\*  
 Annual Average Growth (2011-2021) by SA2**
- 2% or more
  - 1% to less than 2%
  - -1% to less than 1%
  - Less than -1%

\*Includes transition of Year 7 from primary to secondary schools (see Notes 2 and 3)



**Notes:**

1. These SA2 level data have been concorded from Statistical Local Area-level projections, and represent the Government Statistician's best estimates of population growth. These data will be updated when fully-modelled SA2 projections are released in late 2013.
  2. Care should be taken when interpreting the population growth in school-aged children due to the transition of Year 7 from primary to secondary in 2015.
  3. Primary school age persons are those aged between 5 and 12 (inclusive) in 2011, and those aged between 5 and 11 (inclusive) in 2021 or 2031.
- Source: Australian Bureau of Statistics, Australian Statistical Geography Standard, 2011, cat. no. 1270.0.55.001; Queensland Government, State Digital Road Network, September 2012; Queensland Treasury and Trade, Queensland Government population projections, 2011 edition (medium series); Education, Training and Employment; Non-State Schools Accreditation Board; Local Government; GNAF Property Data - 27th February 2012



**SA3: Toowoomba**  
**Level of Schooling: Primary**  
**Projection period: 2021 to 2031**

**LEGEND**

- Government primary schools
- ▲ Catholic primary schools
- ▽ Independent primary schools
- Special schools
- Dwelling settlement patterns

■ Broadacre 10 years or more

▭ Local government area

— Roads

— Railways

— Arterial roads

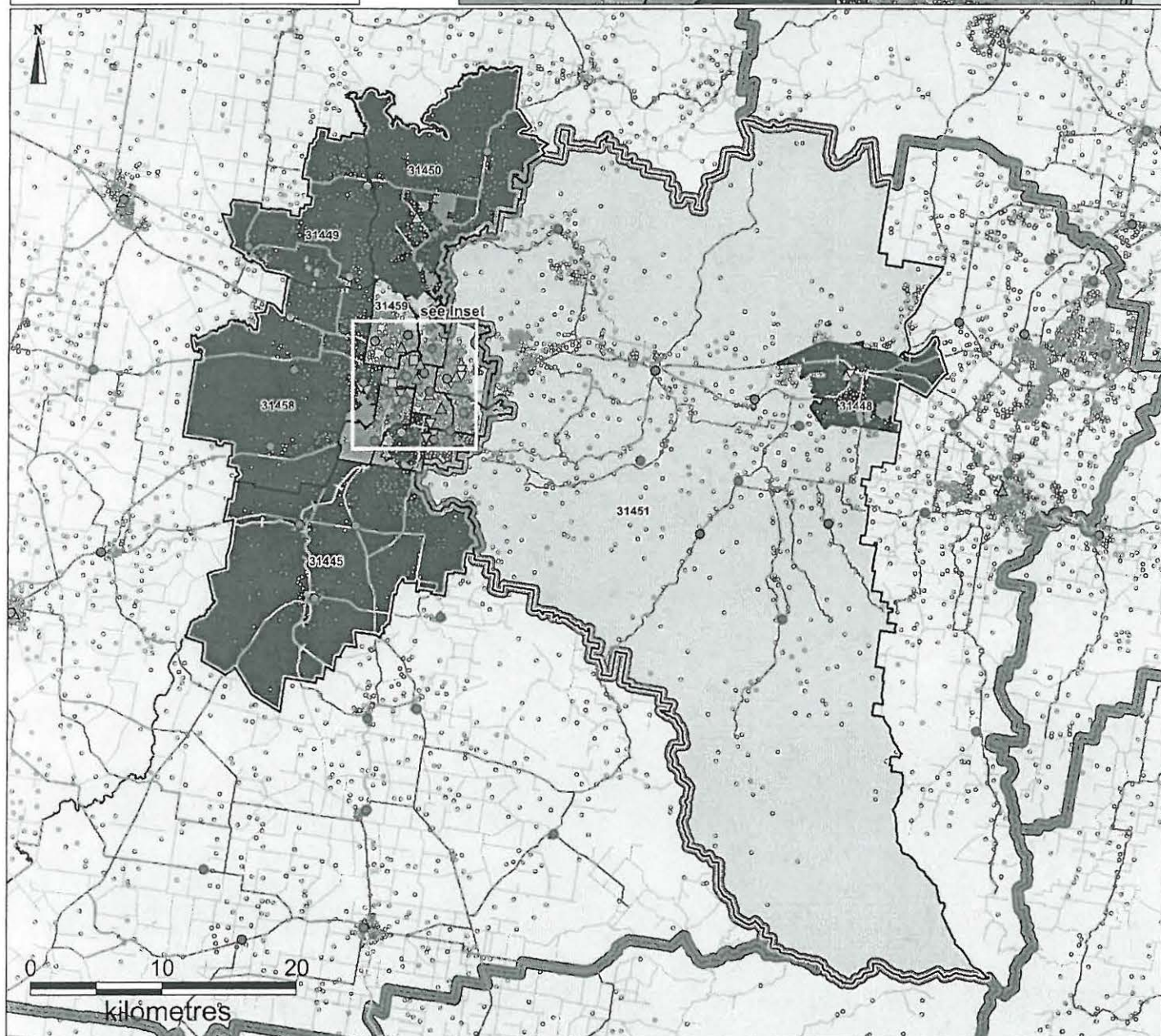
▭ SA2s in Toowoomba SA3

▭ Toowoomba SA3

▭ SA3 boundaries

Projected Primary School Age Persons  
 Annual Average Growth (2021-2031) by SA2

- 2% or more
- 1% to less than 2%
- -1% to less than 1%
- Less than -1%



**Notes:**

1. These SA2 level data have been concorded from Statistical Local Area-level projections, and represent the Government Statistician's best estimates of population growth. These data will be updated when fully-modelled SA2 projections are released in late 2013.

2. Primary school age persons are those aged between 5 and 12 (inclusive) in 2011, and those aged between 5 and 11 (inclusive) in 2021 or 2031.

Source: Australian Bureau of Statistics, Australian Statistical Geography Standard, 2011, cat. no. 1270.0.55 001; Queensland Government, State Digital Road Network, September 2012; Queensland Treasury and Trade, Queensland Government population projections, 2011 edition (medium series), Education, Training and Employment; Non-State Schools Accreditation Board; Local Government; GNAF Property Data - 27th February 2012



## Projection period: 2011 to 2021

### LEGEND

- Government secondary schools
- ▲ Catholic secondary schools
- ▽ Independent secondary schools
- Dwelling settlement patterns

 Broadhectare less than 10 years

 Local government area

Roads  
Railways  
Arterial road

SA2s in Toowoomba SA3

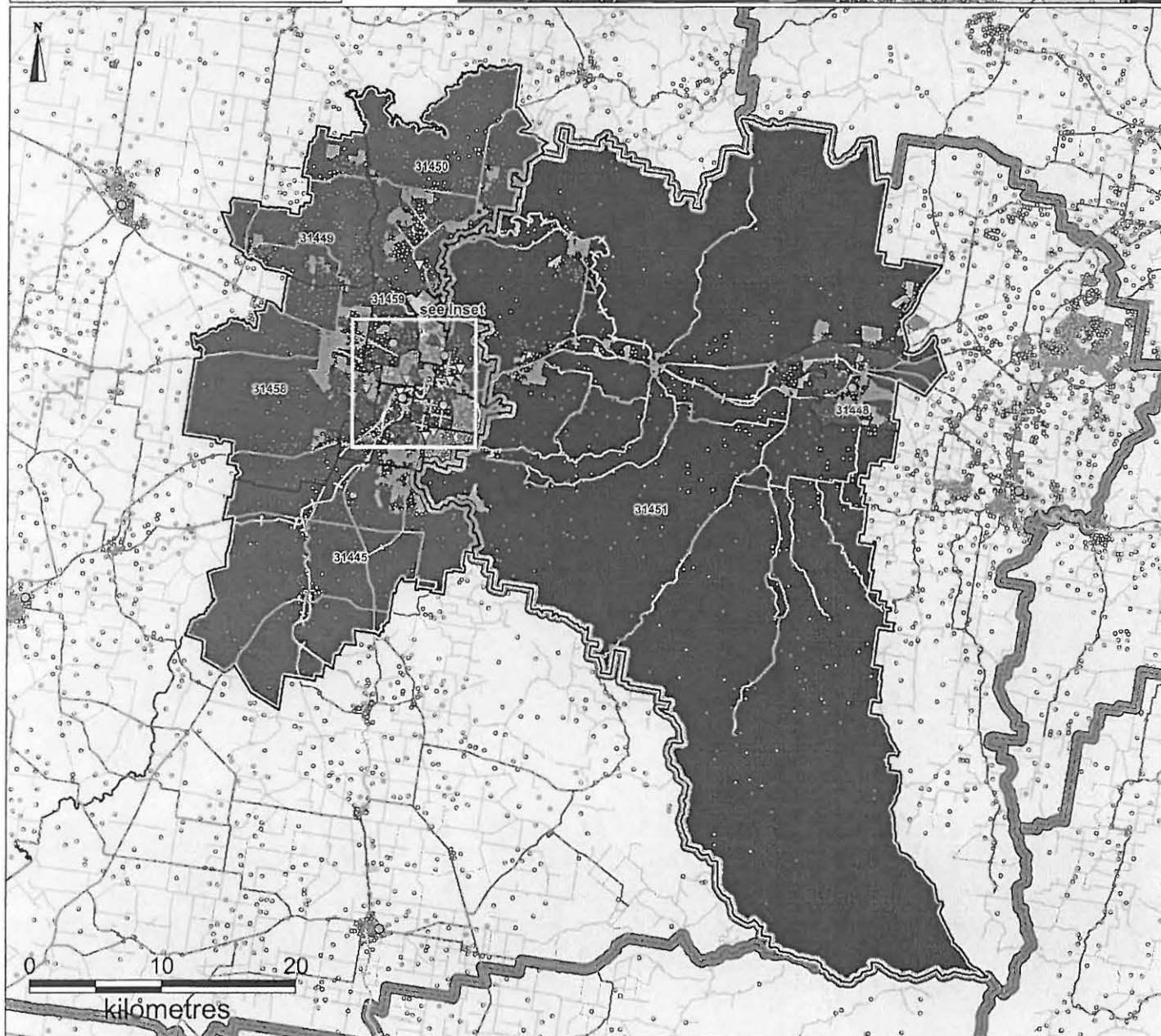
Toowoomba SA3

 SA3 boundaries

Projected Secondary School Age Persons<sup>1\*</sup>  
Annual Average Growth (2011-2021) by SA2

- 2% or more  
 ■ 1% to less than 2%  
 ■ -1% to less than 1%  
 ■ Less than -1%

\*Adjusted for below 100% secondary school participation rate.  
\*Includes transition of Year 7 from primary to secondary school (see Notes 2 and 3).



Notes:

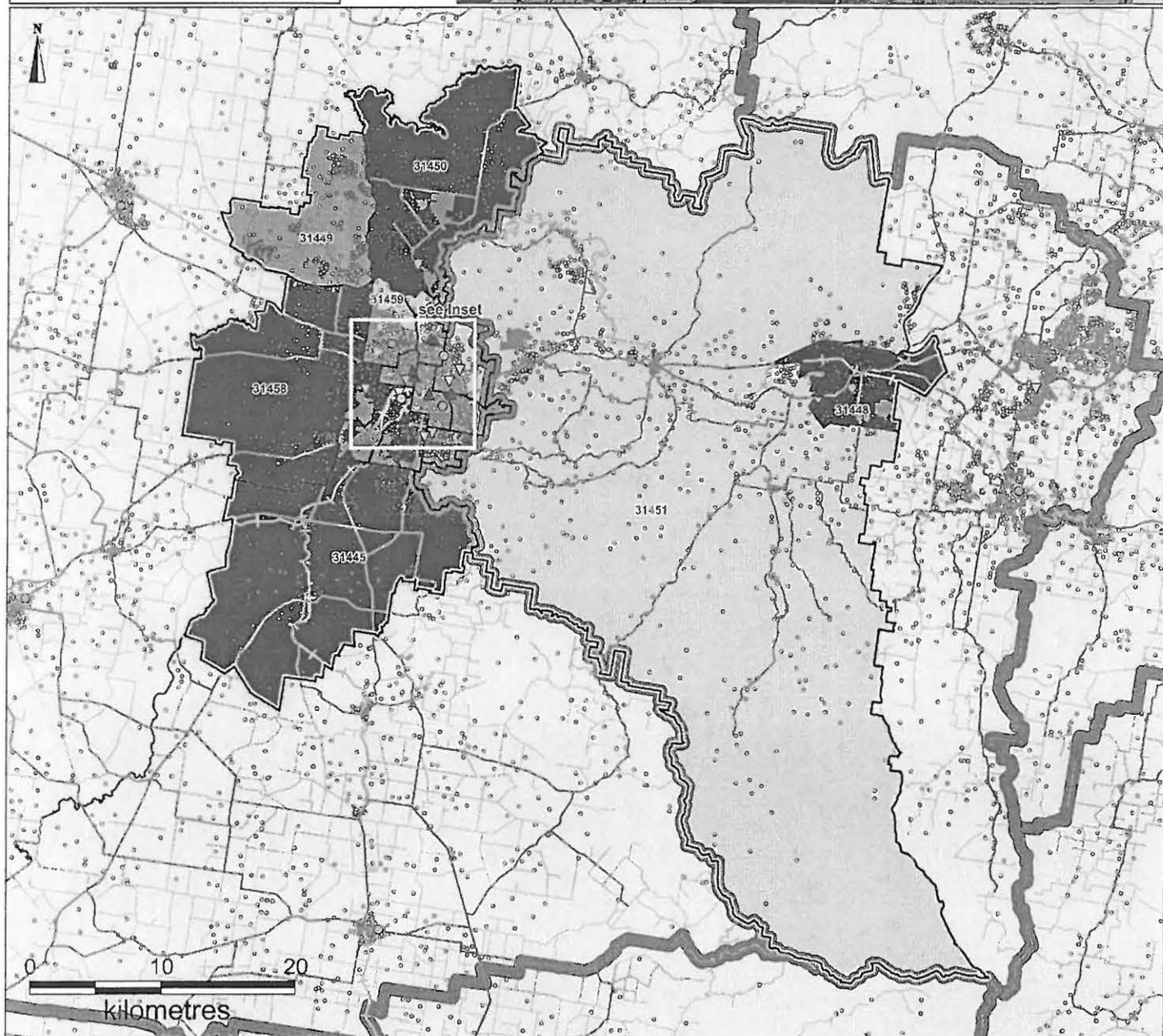
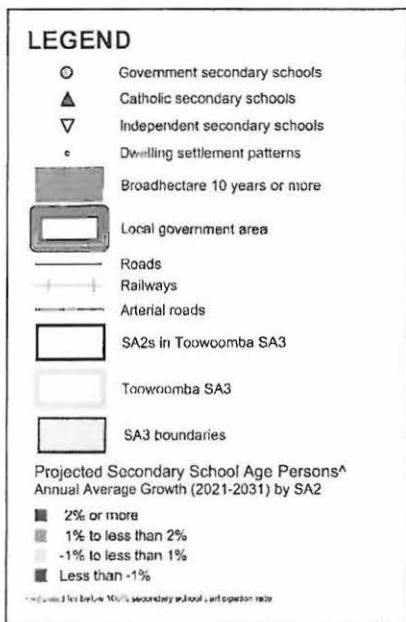
1. These SA2 level data have been concorded from Statistical Local Area-level projections, and represent the Government Statistician's best estimates of population growth. These data will be updated when fully-modelled SA2 projections are released in late 2013.

2. Care should be taken when interpreting the population growth in school-aged children due to the transition of Year 7 from primary to secondary in 2015.

Source: Australian Bureau of Statistics, Australian Statistical Geography Standard, 2011, cat. no. 1270.0.55.001; Queensland Government, State Digital Road Network, September 2012; Queensland Treasury and Trade, Queensland Government population projections, 2011 edition (medium series); Education, Training and Employment; Non-State Schools Accreditation Board; Local Government, GNAF Property Data - 27th February 2012



**SA3: Toowoomba**  
**Level of Schooling: Secondary**  
**Projection period: 2021 to 2031**



1. The

1. These SA2 level data have been concorded from Statistical Local Area-level projections, and represent the Government Statistician's best estimates of population growth. These data will be updated when fully-modelled SA2 projections are released in late 2013.

2. Secondary school age persons are those aged between 13 and 17 (inclusive) in 2011, and those aged between 12 and 17 (inclusive) in 2021 or 2031.

Source: Australian Bureau of Statistics, Australian Statistical Geography Standard, 2011, cat. no. 1270.0.55.001; Queensland Government, State Digital Road Network, September 2012; Queensland Treasury and Trade, Queensland Government population projections, 2011 edition (medium series); Education, Training and Employment; Non-State Schools Accreditation Board; Local Government; CNAF Property Data - 27th February 2012

