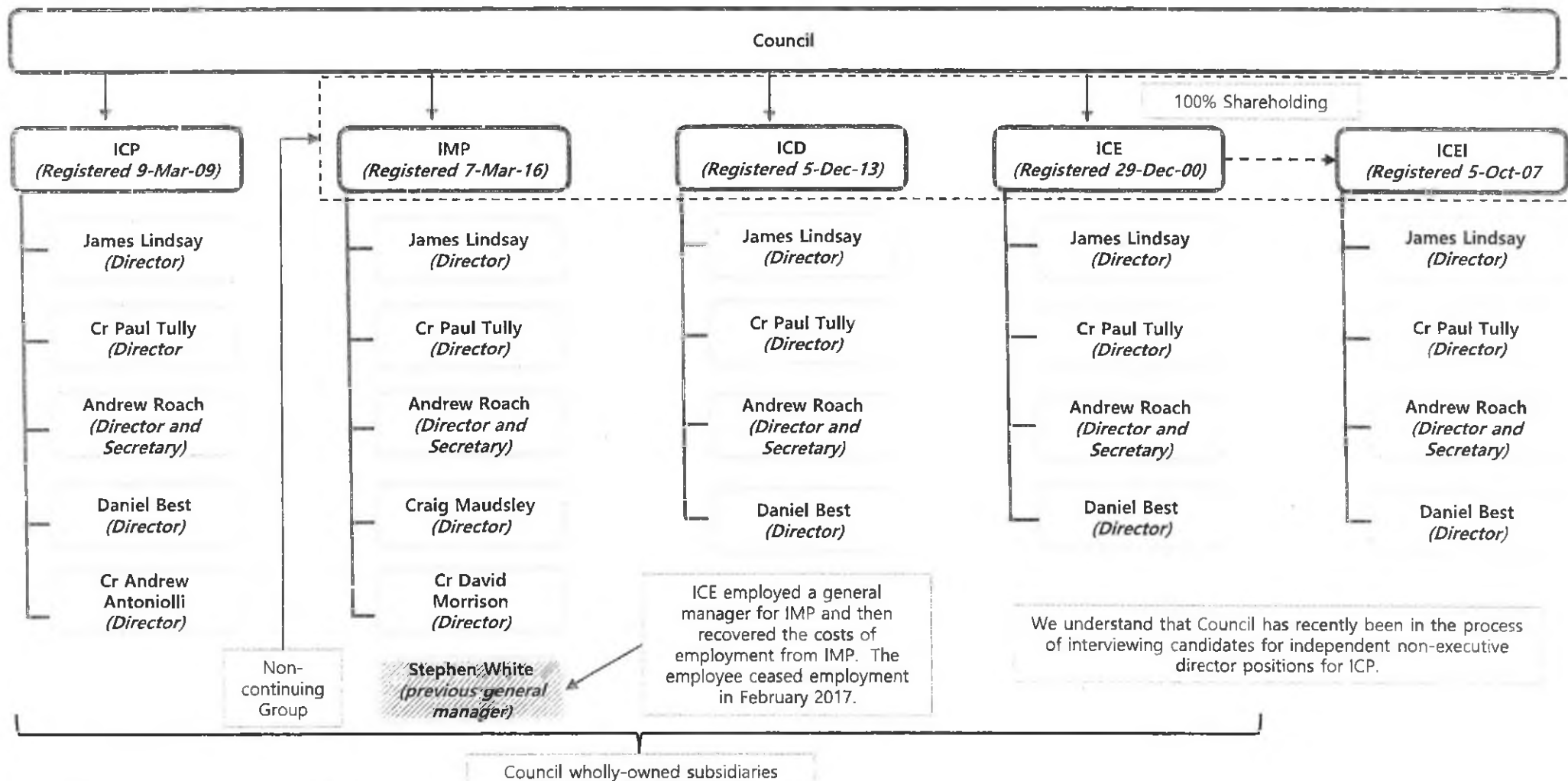


1 Controlled Entities: current position

1.1 Controlled Entities: group structure

Prepared by: Minister Hinchey
 At: Shirley Hinchey
 Time/date: 24/07/2018 7:00pm
 Signature: [Signature]

ICP, IMP, ICD and ICE are all wholly-owned subsidiaries of Council and ICEI is a wholly-owned subsidiary of ICE. All Controlled Entities are managed by Council staff who are utilised across the Controlled Entities as necessary. IMP is the only controlled entity that formerly employed staff external to Council (a general manager for the day-to-day management of IMP). We refer to IMP, ICD, ICE and ICEI as the Non-continuing Group in this report. The majority of matters relating to ICP are the subject of separate reports by McN to Council.



Source: ASIC Company Searches dated 9 January 2018