

Tabled 17/05/16 KH

Queensland Government Cape York Peninsula Land Tenure

EDITION 32b
Prepared by the Department of Natural Resources and Mines
Townsville, Queensland
17 December 2014

- Legend**
- Homesteads
 - Population Centres
 - Major Road
 - Minor Road
 - Boundary of CYP Region as defined in the CYP Heritage Act 2007
 - River
 - Reef
 - Nature Refuge

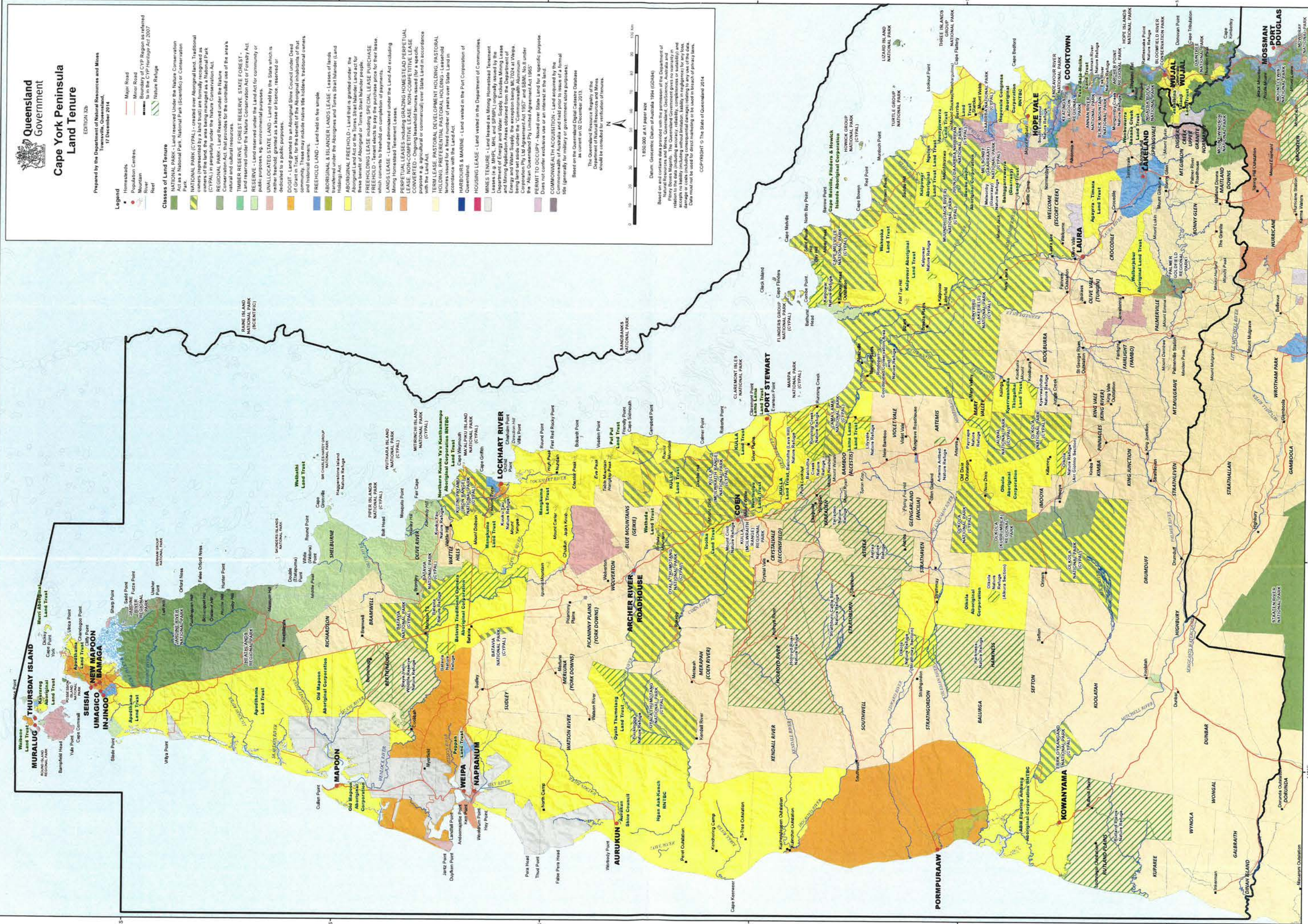
- Classes of Land Tenure**
- NATIONAL PARK** - Land reserved under the Nature Conservation Act as a National Park, National Park (Scientific) or Conservation Area.
 - NATIONAL PARK (CYPAL)** - created over Aboriginal land. Traditional owners (represented by a land trust) are formally recognised as owners of the land, the area being managed as a National Park (CYPAL) in perpetuity under the Nature Conservation Act.
 - REGIONAL PARK** - Land Reserved under the Nature Conservation Act, that provides for the controlled use of the area's natural and cultural resources.
 - FOREST RESERVE / STATE FOREST** - Land reserved under the Nature Conservation Act or Forestry Act for public purposes.
 - RESERVE** - Land reserved under the Land Act for community or public purposes.
 - UNALLOCATED STATE LAND** - Land held by the State which is neither freehold, granted as a lease of tenure, reserved or dedicated to a public purpose.
 - DEED** - Land granted to an Aboriginal Shire Council under Deed of Grant in Trust for the benefit of the Aboriginal inhabitants of that community. These may include native title holders, traditional owners and historical owners.
 - FREEHOLD LAND** - Land held in fee simple.
 - ABORIGINAL & ISLANDER LANDS LEASE** - Leases of land transferred under the Aboriginal and Torres Strait Islander (Land Holding) Act.
 - ABORIGINAL FREEHOLD** - Land that is granted under the Aboriginal Land Act or the Torres Strait Islander Land Act for the benefit of Aboriginal or Torres Strait Islander people.
 - PERPETUAL LEASE INCLUDING SPECIAL LEASE PURCHASE** - A leasehold tenure that is purchased by a landowner for their lease which converts to freehold on completion of payment.
 - LANDS LEASE** - Land administered under the Land Act including Mining Homestead Tenement Leases.
 - PERPETUAL LEASES INCLUDING GRAZING HOMESTEAD PERPETUAL LEASE, NON-COMPETITIVE LEASE, NON-COMPETITIVE LEASE CONVERTED** - Ongoing leasehold tenures issued (for a specific purpose) with a e.g. agricultural or commercial) over State Land in accordance with the Land Act.
 - TERM LEASE, PASTORAL DEVELOPMENT HOLDING, PASTORAL HOLDINGS, PREFERENTIAL PASTORAL HOLDING** - Land tenure issued for a fixed number of years over State Land in accordance with the Land Act.
 - HARBOURS & MARINE** - Land vested in the Port Corporation of Queensland.
 - HOUSING LEASE** - Land vested in the Department of Communities.
 - MINES TENURE** - Land leased as Mining Homestead Tenement Leases (e.g. MHP, MHL and SPML) or under the Department of Energy and Water Supply, Excludes Mining Lease and Mining Application Areas obtained from the Department of Energy and Water Supply, the exception being M7024 at Weipa, Corporation Pty Ltd Agreement Act 1957 and SBML No 8 under the Alcan Queensland Pty Limited Agreement Act 1995.
 - PERMIT TO OCCUPY** - Issued over State Land for a specific purpose. Does not confer exclusive use or an interest in the land.
 - COMMONWEALTH ACQUISITION** - Land acquired by the Commonwealth of Australia and held prior to issue of a formal title (generally for military or government store purposes). Based on the Queensland Digital Cadastre Database as at 02 December 2013.

The Queensland Resource Registry of the Department of Natural Resources and Mines should be consulted for verification of tenures.

1:650,000 @ A1 paper size
Datum: Geocentric Datum of Australia 1984 (GDA84)

Based on data provided with the permission of the Department of Natural Resources and Mines, Queensland. GeoScience, Australia and the Queensland Government gives no warranty in relation to the data. The Queensland Government gives no warranty or accepts no liability (including without limitation, liability in negligence) for any loss, damage or costs (including consequential damage) relating to any use of the data. Data not included is used for direct mapping to be used in breach of privacy laws.

Copyright © The State of Queensland 2014



Telrad 17/05/16



Starcke

Google earth

© State of Queensland 2016, Includes material © Airbus DS 2013-16, all rights reserved

Tabled 17/05/16 KH



Starcke

Google earth

© State of Queensland 2016. Includes material © Airbus DS 2013-16, all rights reserved

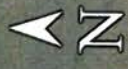
TABLED 17/05/16 KH



Google earth

© State of Queensland 2016. Includes material © Airbus DS 2013-16, all rights reserved

Togged 17/05/16 KH



Starcke

Google earth

© State of Queensland 2016. Includes material © Airbus DS 2013-16, all rights reserved

Togled 17/05/16 KH

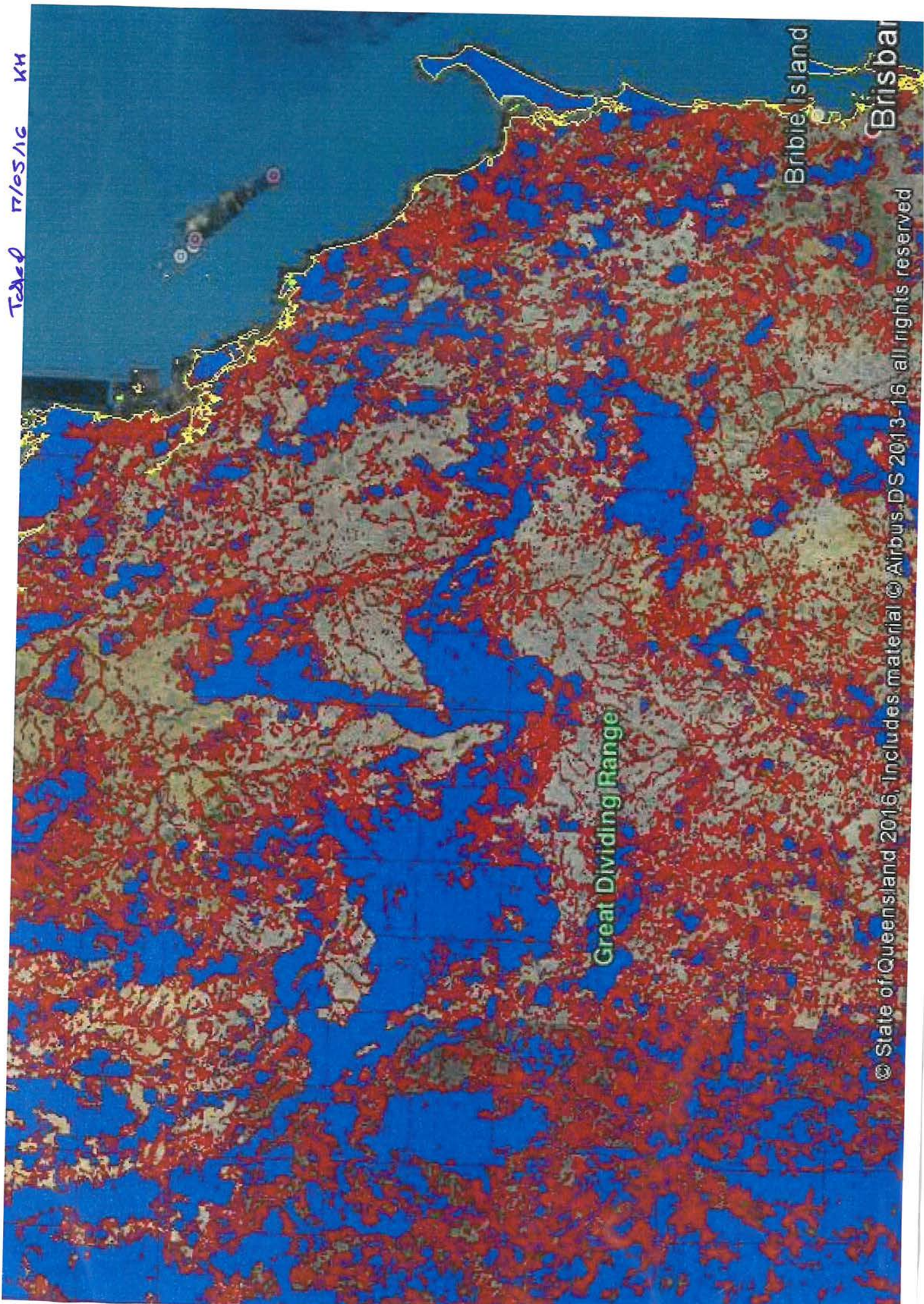


© State of Queensland 2016. Includes material © Airbus DS 2013-16, all rights reserved

Google

f Carmentaria

Teddy 17/05/16 KH



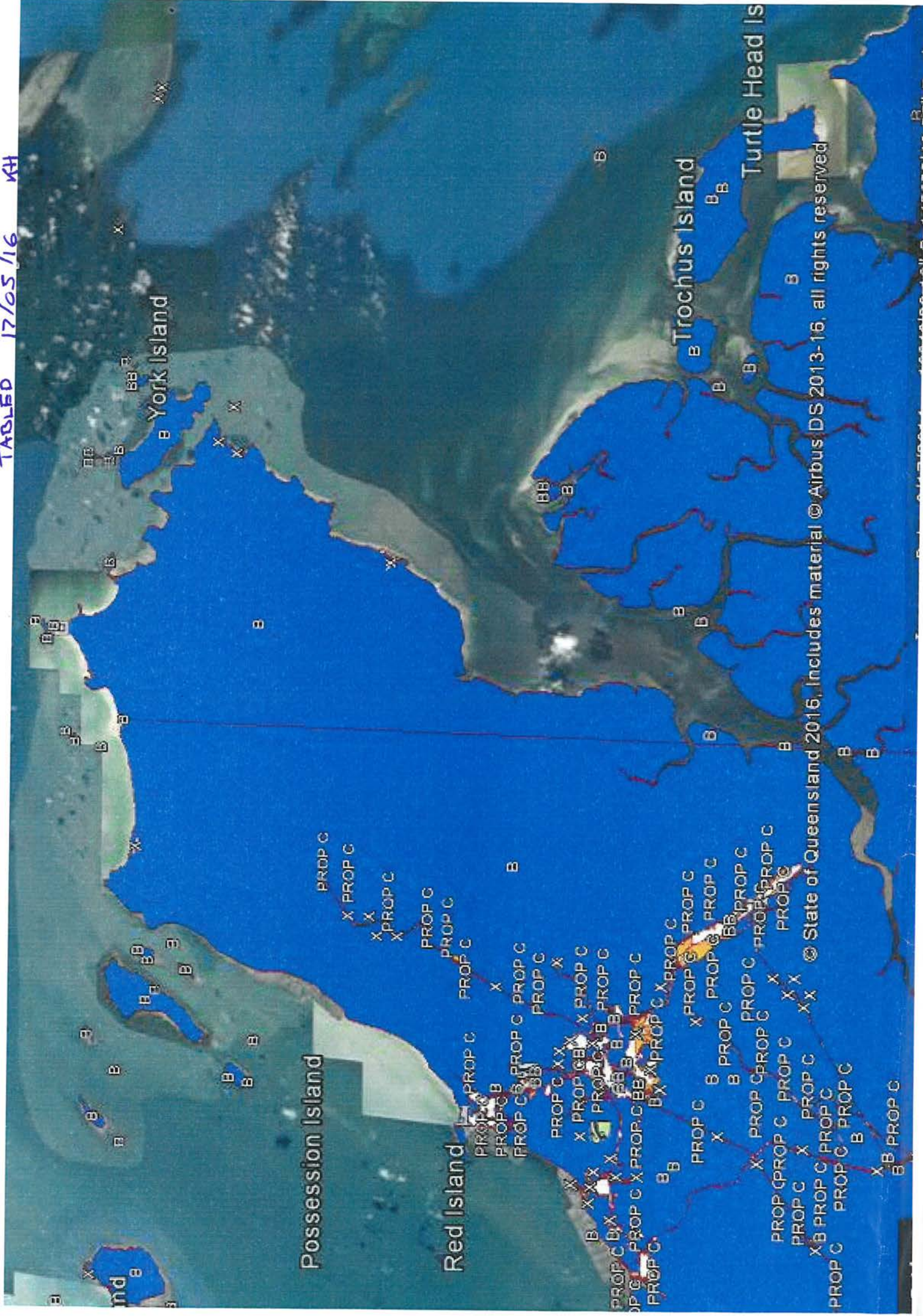
Great Dividing Range

Bribie Island

Brisbane

© State of Queensland 2016. Includes material © Airbus DS 2013-16. All rights reserved

TABLED 17/05/16 KH



York Island

Trochus Island

Turtle He

Possession Island

Red Island

© State of Queensland 2016. Includes material © Airbus DS 2013-16. all rights reserved

