

INTRA REGIONAL TRANSPORT CORRIDOR

BEATTIE ROAD TO NERANG-BROADBEACH ROAD 4 LANE AND HOV PLANNING

ROAD CORRIDOR DEVELOPMENT PLANS

Queensland Legislative Assembly
Number: 57217/413.
16 SEP 2021
MP: MR O'CONNOR MP
Tabled
By Law
Clerk's Signature: [Signature]

MAUNSELL | AECOM

Meunsell Australia Pty Ltd
A.B.N. 20 093 646 925

Cribb Street
Milton QLD 4064

Ph. (07) 3958 6700
Fax. (07) 3958 6705

ROAD CORRIDOR DEVELOPMENT PLAN

This drawing has been prepared to assist in managing development of the existing road corridor and to determine possible future requirements for road infrastructure, but does not depict firm road planning.



Manager Transport Planning
/ /

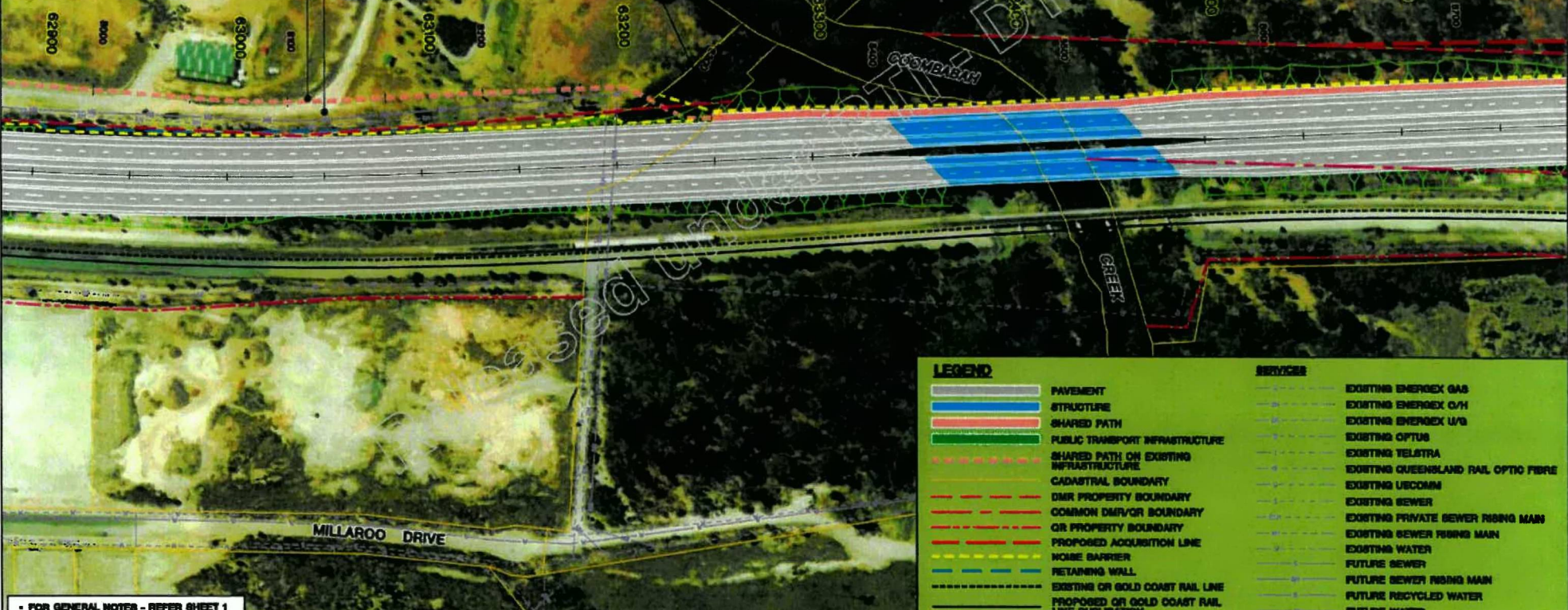


NOT FOR CONSTRUCTION

COUNTRY CLUB ACCESS ROAD
DESIGNED AND CONSTRUCTED
BY OTHERS

SHARED PATH TO BE PROVIDED
AS PART OF PROPOSED DEVELOPMENT
ACCESS ROAD

JOIN SHARED PATH TO SHARED
PATH ON PROPOSED DEVELOPMENT
ACCESS ROAD



LEGEND		SERVICES	
[Grey line]	PAVEMENT	[Blue line]	EXISTING ENERGEX GAS
[Blue line]	STRUCTURE	[Red line]	EXISTING ENERGEX O/H
[Red line]	SHARED PATH	[Green line]	EXISTING ENERGEX U/A
[Green line]	PUBLIC TRANSPORT INFRASTRUCTURE	[Dashed blue line]	EXISTING OPTUS
[Dashed green line]	SHARED PATH ON EXISTING INFRASTRUCTURE	[Dashed red line]	EXISTING TELSTRA
[Dashed red line]	CADASTRAL BOUNDARY	[Dashed green line]	EXISTING QUEENSLAND RAIL OPTIC FIBRE
[Dashed blue line]	DMR PROPERTY BOUNDARY	[Dashed yellow line]	EXISTING USCOMM
[Dashed yellow line]	COMMON DMR/OR BOUNDARY	[Dashed purple line]	EXISTING SEWER
[Dashed purple line]	QR PROPERTY BOUNDARY	[Dashed brown line]	EXISTING PRIVATE SEWER RISING MAIN
[Dashed brown line]	PROPOSED ACQUISITION LINE	[Dashed pink line]	EXISTING SEWER RISING MAIN
[Dashed pink line]	NOISE BARRIER	[Dashed light blue line]	EXISTING WATER
[Dashed light blue line]	RETAINING WALL	[Dashed light green line]	FUTURE SEWER
[Dashed light green line]	EXISTING QR GOLD COAST RAIL LINE	[Dashed light purple line]	FUTURE SEWER RISING MAIN
[Dashed light purple line]	PROPOSED OR GOLD COAST RAIL LINE DUPLICATION	[Dashed light yellow line]	EXISTING WATER
		[Dashed light orange line]	FUTURE RECYCLED WATER
		[Dashed light red line]	FUTURE WATER

FOR GENERAL NOTES - REFER SHEET 1

<table border="1"> <thead> <tr> <th>Revisions</th> <th>Clarified</th> <th>Date</th> <th>Initial</th> <th>Associated job nos</th> </tr> </thead> <tbody> <tr> <td> </td> <td> </td> <td> </td> <td> </td> <td> </td> </tr> </tbody> </table>	Revisions	Clarified	Date	Initial	Associated job nos						Dimensions in metres except where shown otherwise. Culvert sizes in millimetres. Scales 0 10 20 30 40 50m 52300 1:200 10000 1:500	Survey books Survey file(s) Through change(s) from	INTRA REGIONAL TRANSPORT CORRIDOR BEATTIE ROAD TO NERANG-BROADBEACH ROAD 4-LANE AND HOV PLANNING	ROAD CORRIDOR DEVELOPMENT PLAN PICTORIAL SHEET 12 OF 24	MAUNSELL AECOM Mounsell Australia Pty Ltd A.B.N. 20 000 040 020	Queensland Government Department of Infrastructure
Revisions	Clarified	Date	Initial	Associated job nos												
A Original Issue	(Office use only)	Reference Points Preceding RPC Dist. to start of job (km) From start to end of job From end to following RPC Following RPC	Survey No. Stage Drawn Design Examined Certified for and on behalf of Mounsell Australia RPED No. 5825	Approved District Director South Coast Waterland	JOB No. 166/113/901	No. 12 of 26 plans Plan No. LP-12 Revision: A										



The Queensland Cabinet and Ministerial Directory

Ground-breaking news: major works start on Gold Coast Light Rail Stage 2

Published Friday, 05 August, 2016 at 10:00 AM

Minister for Transport and the Commonwealth Games

The Honourable Stirling Hinchliffe

JOINT MEDIA RELEASE

Queensland Minister for Transport and the Commonwealth Games Stirling Hinchliffe

Federal Minister for Urban Infrastructure Paul Fletcher

City of Gold Coast Mayor Tom Tate

Helensvale station is set to become the most advanced, modern public transport interchange in the country, with major works now underway to build the \$420 million Gold Coast Light Rail Stage 2 extension.

Minister for Transport and the Commonwealth Games Stirling Hinchliffe, joined the Federal Minister for Urban Infrastructure Paul Fletcher and City of Gold Coast Mayor Tom Tate, to officially turn the sod and mark the start of infrastructure construction.

"Construction work will now accelerate in the race towards the Gold Coast 2018 Commonwealth Games and will support up to 1000 direct and indirect jobs during construction and operation," Mr Hinchliffe said.

"Bulk earthworks and excavation are underway to prepare for the installation of the track to ensure this gold medal project is Games-ready before April 2018.

"In an Australian-first, the Stage 2 project will also deliver the first public transport station that will integrate all modes of passenger transport.

"The project will transform Helensvale station into a key public transport connector with heavy rail, light rail, buses and taxis within the same station footprint.

"Importantly Stage 2 will link Brisbane and the Gold Coast by rail with Helensvale becoming the vital connection in a one-transfer journey.

"This public transport hub will provide a bold new point of entry to the area and will also support the 2018 Commonwealth Games transport task with up to 3000 people an hour able to be moved by light rail from Helensvale into Southport, Surfers Paradise and Broadbeach.

"Four new trams will be required to service Stage 2 and they have already been ordered. They will be built in Germany and arrive in Australia by October 2017 and a total of 18 light rail vehicles will service both stages."

Federal Minister for Urban Infrastructure Paul Fletcher said when stage 2 operations begin in early 2018, public transport users will have a one-transfer journey from Brisbane to the Gold Coast and the option of stopping at any of the 19 light rail stations with bus connections at key activity centres between Helensvale and Broadbeach.

"Helensvale Station on the Gold Coast will become a modern, multi-purpose transport hub providing local and international visitors with effective and flexible transport options in time for the Commonwealth Games in 2018," Mr Fletcher said.

"This project will be vital to the success of the Commonwealth Games with visitors and spectators expected to generate strong demand for public transport during the Games.

"But it will of course deliver continuing benefits following the Games, offering light rail connectivity between key Gold Coast locations and connecting to the heavy rail network at Helensvale. This will bring benefits for many years, as the transport task expands in line with expected population and economic growth on the Gold Coast."

Mayor Tom Tate said the Stage 2 light rail connection and duplication of the heavy rail line from Helensvale to Coomera would also unlock further economic potential for the region with the public already seeing this growth on two parcels of land near Helensvale station.

Private developer Villawood will build a 620-house and 1500-apartment estate on the site of the former Gold Coast Country Club. Another developer Villa World plans to develop former farmland just to the south into the 395-lot Arundel Springs project.

"Future residents of these developments will have easy access to the Helensvale transport interchange and by extending the existing light rail system it will ease congestion, improve accessibility across the region and support economic growth," Cr Tate said.

GoldLinQ Chairman John Witheriff said construction activity would continue across the alignment into the second half of 2017 when testing and commissioning of the Stage 2 extension was scheduled.

"There will be significant construction activity over the next 12 months as we focus on delivering this vital infrastructure however all efforts will be made to minimise the impact on residents and motorists," Mr Witheriff said.

"We are committed to ensuring Stage 2 construction supports the Gold Coast. This will be a local job built by local workers and contractors.

"About 140 local businesses have registered on CPB Contractors industry register and we are looking for more.

"We are once again focused on bettering the targets we have set for local participation and are confident this will be achieved due to skilled workforce and companies we have here in our city."

Stage 2 will contribute to the Queensland and local economy by providing up to 1000 direct and indirect jobs during construction, providing an immediate boost to the construction industry and long-term benefits to tourism and other Gold Coast industries.

Stage 2 will include three new light rail stations at Parkwood East, Parkwood and Helensvale and an extra 1400 park'n'ride carparks at Helensvale and Parkwood stations.

The \$420 million project will be delivered with a \$270 million contribution from the Queensland Government, \$95 million from the Australian Government and up to \$55 million from the City of Gold Coast.

For more information on construction of Stage 2 visit www.gclrstage2.com.au
(<http://www.gclrstage2.com.au>)

Artist impressions of Helensvale Station:

<https://www.dropbox.com/sh/ah0qzth9zy3wawv/AADjF9Cz1GBLSqM1mARK57Ila?dl=0>
(<https://www.dropbox.com/sh/ah0qzth9zy3wawv/AADjF9Cz1GBLSqM1mARK57Ila?dl=0>)

Media contact: Jessica Hill 0475 950 772 (Hinchliffe) Andrew Blow 0411 403 937 (Fletcher)
Warwick Sinclair 0424 778 573 (Tate)

Media Statements (/)

› [Subscribe \(/Subscribers/Create\)](#)

› [Help and Support \(/Help\)](#)

[Copyright \(https://www.qld.gov.au/legal/copyright/\)](https://www.qld.gov.au/legal/copyright/) | [Disclaimer \(https://www.qld.gov.au/legal/disclaimer/\)](https://www.qld.gov.au/legal/disclaimer/)

| [Privacy \(https://www.qld.gov.au/legal/privacy/\)](https://www.qld.gov.au/legal/privacy/) | [Right to information \(https://www.premiers.qld.gov.au/right-to-info.aspx\)](https://www.premiers.qld.gov.au/right-to-info.aspx)

| [Accessibility \(https://www.qld.gov.au/help/accessibility/index.html\)](https://www.qld.gov.au/help/accessibility/index.html)

| [Jobs in Queensland Government \(https://www.smartjobs.qld.gov.au/\)](https://www.smartjobs.qld.gov.au/)

| [Français \(Other languages\) \(https://www.qld.gov.au/languages/\)](https://www.qld.gov.au/languages/)

© The State of Queensland 1997–2021 (Department of the Premier and Cabinet)

[Queensland Government \(https://www.qld.gov.au/\)](https://www.qld.gov.au/)